

Data Sheet

Mobius® 2D and 3D assemblies, storage and transportation systems

Safe, effective fluid management

Mobius® 2D and 3D assemblies, storage and transportation systems are key components in delivering efficient, ergonomic and scalable process solutions to your production lab. For multiple applications in single-use manufacturing operations, these systems consist of a series of PE drums, stainless steel bins, collapsible containers, carts and 2D and 3D single-use assemblies. Mobius® Assemblies, Storage and Transportation Systems are designed to reduce operator error and improve process efficiency. With a full spectrum of systems to choose from, you get greater flexibility, mobility and support for your single-use technologies.



Applications

- Sterile filtration
- Storage
- Preparation of bioreactor feeds
- Bulk intermediates
- Buffer and Media preparation
- Transportation between locations

Benefits

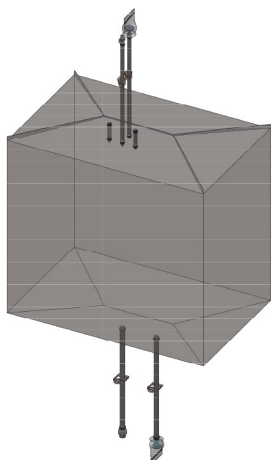
- Consistent, reproducible processing results
- Scalable assemblies
- EZ Fold bag deployment
- Films with low extractable profiles
- Applicable validations for intended use

Mobius® Standard Assemblies

Mobius® standard assemblies are convenient, single-use solutions for a wide range of biopharmaceutical applications, such as formulation, processing of sterile fluids or buffer, storage and transportation. The assemblies are animal-derived component free and delivered pre-sterilized by gamma irradiation; ready to use in your existing processes—right out of the box.

3D, Drum-style, Single-use Assemblies

Available in volumes from 50 L to 200 L, they are composed of a PureFlex™ film container, fittings, C-Flex® and silicone tubing with pinch clamps on each line. The containers are specifically designed to fit Mobius® polyethylene drums but work just as well with other commercially available plastic storage drums.



2D, Pillow-style, Single-use Assemblies

Available in volumes from 50 mL to 50 L, they are composed of the container, tubing with pinch clamps on each line, fittings and patented NovaSeal™ sealing technology for secure, sterile disconnection. The containers also feature hangers for easy lifting. Each assembly includes a silver certificate of quality.



Quality Assurance

Mobius® standard assemblies are produced in facilities that adhere to cGMP guidelines. Family component materials have been tested post gamma irradiation and meet criteria for USP <88> Biological Reactivity Test for Class VI plastics. Leak integrity testing, using a pressure decay method on each lot, ensures product quality. Every Mobius® assembly comes with a quality guarantee for material and workmanship. The fluid contact path of every 3D single-use assembly is certified ADCF.

Validation Support Services

For validation support of your single-use solutions, Provantage® Services representatives provide unmatched application, validation and engineering support. They can help you integrate and validate disposable assemblies right in your own process, in a manner that guarantees product quality, regulatory compliance and according to industry practiced guidelines.

Each Standard Assembly package includes a Mobius® Silver Certificate of Quality.

Certification	Shelf Life Claim	Sterility Claim	LAL & Particulate	Leak Testing	Class VI USP (88)
Gold	2 years	Sterile, Quarterly Validation	Lot Release	100% of lot on full assembly & bag	Post-gamma, component family
Silver	2 years	Sterile, Quarterly Validation	Quarterly review of results	In-process leak testing	Post-gamma, component family
Bronze	None	Gamma-irradiated >25 kGy, not validated sterile	No testing performed	No testing performed	Pre-gamma resin only

*Complete assembly testing is performed unless prohibited by the design.

Mobius® Drums and Collapsible Bins

Drums

Mobius® drums are specifically designed for the use and storage of media and buffer solutions in 3D process-scale disposable manufacturing applications. The drums are not only easy-to-use but also can accommodate top and bottom container port arrangements, including single-use filter assemblies for sterile applications. They are supported by an optional dolly.



Collapsible Bins

Mobius® collapsible bins are easy-to-use storage vessels that support single-use process containers during the biopharmaceutical manufacturing process. They are designed to provide assistance for handling process containers of 100 L to 1000 L sizes during various manufacturing stages, ranging from buffer preparation and media delivery to final product formulation. Stackable and collapsible for easy storage when not used, Mobius® collapsible bins provide optimal space utilization in a crowded clean-room.



Mobius® Stainless Steel Storage and Transportation

Stainless Steel Bins

Designed for convenient handling, Mobius® stainless steel bins offer an advanced solution for the use and storage of media, buffer and additional intermediates in the biopharmaceutical manufacturing process.

The bins feature a single large door that facilitates operator access and positioning of the process container inside the bin. Constructed with a 304/304 L stainless steel-grade material and an optional 316 stainless steel upgrade on the process container contact surface, the bins feature stacking guides and a new tray design. The tray has a convenient slide-out capability, a positive pitch to ensure controlled drainage, and ample space to hold various disposable components. For sizes 1000 L and above, the tray can hold up to 30 in. capsule filters. The bins are both pallet jack and fork lift compatible.



Unique Registration System

The patent-pending registration system is comprised of a disposable plate and a corresponding opening at the bottom of the bin. The plate's unique keying mechanism permits only one-way placement of the container inside the bin, eliminating alignment errors. Each registration plate can accommodate up to three bottom ports, allowing operators to use both Mobius® assemblies and other process containers inside the bin.

Easy Process Container Filling in Every Stainless Steel Bin

Mobius® disposable process containers are built with an easy-folding design that eliminates the need for operator or mechanical assistance during the filling process for bin sizes of up to 3500 L. With an assortment of configurations ranging from 200 L to 3,500 L, Mobius® stainless steel bins turn complex product handling processes into simple solutions.



Mobius Transportation

Mobius® 3D Large Liquid Transportation Systems are the latest addition to our family of single-use fluid management capabilities, and compliment our upstream and down stream processing portfolio of technologies.

Mobius® 3D Large Liquid Transportation Systems are fluid management solutions that enable biopharmaceutical manufacturers

to safely move, via road, large liquid volumes of media, buffers, In-process intermediates, and final bulk drug product between different global sites, different regional sites, or even within the same facility.

- Four different single-use bag assembly options with working volumes of 100 L to 500 L and options of a Lynx® sterile connector or a general non-aseptic connector.
- All single-use bag assemblies are constructed using our robust PureFlex™ Plus film, demonstrating a very low extractables profile when tested according to BPOG guidelines.
- 304L stainless steel transporters, designed with carrier cleanability in mind
- Systems are validated according to ISTA 3E shipping guidelines for large bulk liquids, at both cold and ambient temperatures.
- When empty and not in use, the Stainless Steel carriers can be stacked two units high.



Specifications

Single Use Assemblies**

Mobius® 2D Pillow-style Standard Assemblies**

Container Volume	50 mL, 100 mL, 250 mL, 1 L	5 L, 10 L, 20 L, 50 L						
Materials*	(1) PureFlex™ film with hanger	(1) PureFlex™ film with hanger and support rod						
Ports	(2) HDPE boat with 2 ports	(2) End-ported with 3 ports						
Tubing	(3) Platinum-cured Silicone, 3 mm ID x 6 mm OD, 18 in. long with NovaSeal™ technology (4) C-Flex® 374 tubing, 1/8 in. ID x 1/4 in. OD, 18 in. long (5) Pinch clamp	(3) Platinum-cured Silicone, 3/8 in. ID x 5/8 in. OD, 18 in. long with NovaSeal™ technology (4) C-Flex® 374 tubing, 3/8 in. ID x 5/8 in. OD, 18 in. long (5) Platinum-cured Silicone, 1/4 in. ID x 1/2 in. OD, 18 in. long (6) Pinch clamp						
End Fittings	(6) Female luer fitting with cap, 1/8 in. Kynar® resin	(7) Colder® MPC male fitting with cap, 3/8 in. (8) Female luer fitting with cap, 1/4 in. Kynar resin						
Configurations								
Certificate of Quality	Mobius® Silver							
Outer Container Dimensions (nominal)								
Volume	50 mL	100 mL	250 mL	1 L	5 L	10 L	20 L	50 L
Length, in. (cm)	5.6 (14.3)	6.0 (15.2)	7.3 (18.5)	12.1 (30.8)	14.8 (37.6)	24.4 (62.1)	25.7 (65.4)	32.5 (82.6)
Width, in. (cm)	2.9 (7.5)	3.3 (8.3)	5.3 (13.5)	5.9 (15.0)	13.1 (33.2)	11.8 (30.0)	16.9 (43.1)	23.0 (58.4)

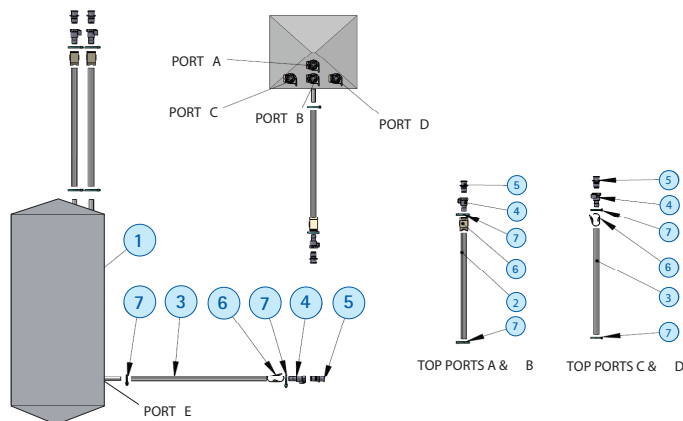
*All components used in standard assemblies (with the exception of HDPE boats) are animal-derived free. HDPE boats are EMEA 410/01 compliant.

**Configurable assemblies are available, please contact your local representative.

Mobius® 3D Drum-style Assemblies

Container Volume	50L, 100L, 200L
Materials	(1) PureFlex™ film container
Ports	A, B, C, D, E
Tubing	(2) C-Flex® 374 tubing 1/2 in. ID x 3/4 in. OD x 36 in. LG (3) Dow Silicone Pharma 50 1/2 in. ID x 3/4 in. OD x 36 in. LG (4) 1/2 in. MPX Coupling Body (5) 1/2 in. MPX Sealing Plug (6) Pinch Clamp (7) Cable Tie
End Fittings	(4) 1/2 in. MPX Coupling Body (5) 1/2 in. MPX Sealing Plug (6) Pinch Clamp (7) Cable Tie
Certificate of Quality	Mobius® Silver

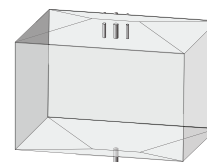
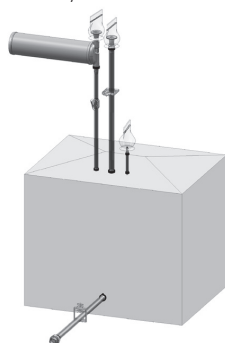
Configurations 50 L, 100 L, 200 L



Outer Container Dimensions (nominal)	50	100	200
Volume, L	50	100	200
Height, in. (cm)	26.00 (66.04)	29.00 (73.66)	35.00 (88.90)
Length, in. (cm)	12.00 (30.48)	16.50 (41.91)	20.00 (50.80)
Width, in. (cm)	12.50 (31.75)	17.00 (43.18)	20.50 (52.07)

Mobius® Collapsible Bin Assemblies**

Container Volume	250 L with Filter	250 L without filter
Materials*	PureFlex™ film	PureFlex™ film
Configurations	Assembly with Filter	Assembly without Filter



Assembly Dimensions (nominal)			
Volume, L	250	500	1000
Length, in.	30.5	43.5	43.5
Width, in.	22.75	42.75	42.75
Height, in.	25.25	20.0	37.0

*All components used in standard assemblies are animal-derived free.
 **Configurable assemblies are available, please contact your local representative.

Mobius® Stainless Steel Bin Assemblies**

Container Volume, L	500, 1000, 1500, or 2000
Materials* Can be assembled with or without filters	PureFlex™ film

Configurations	Assembly 1 (with Mobius® registration plate)	Assembly 2 (universal fitting)
-----------------------	--	--------------------------------

Assembly Dimensions (nominal)				
Volume, L	500	1000	1500	2000
Length, in.	29	36	36.5	36
Width, in.	45	45	45.5	45
Height, in.	38.25	52.38	61	86

*All components used in standard assemblies are animal-derived free.
 **Configurable assemblies are available, please contact your local representative.

Mobius® 3D Large Liquid Transportation System Assemblies

Container Volume, L	200, 500
Materials*	PureFlex™ Plus film

Configurations	Aseptic Assembly	Non-Aseptic Assembly
-----------------------	------------------	----------------------

Assembly Dimensions (nominal)		
Volume, L	100-200	200-500
Length, in.	21	29
Width, in.	28	43.5
Height, in.	24	29

*All components used in standard assemblies are animal-derived free.
 **Configurable assemblies are available, please contact your local representative.

Mobius® Drums

Drum				
Dimensions	50 L Drum with Lid	100 L Drum with Lid	200 L Drum with Lid	
Capacity, L	50	100	200	
Capacity, gal	14	27	53	
Drum weight, lbs (kg)	7 (3.18)	11 (4.99)	22 (9.98)	
Height to tip, in. (cm)	27.00 (68.60)	29.90 (75.90)	36.90 (93.70)	
Diameter with lip, in. (cm)	14.00 (35.60)	18.90 (48.00)	25.6 (65)	
Dolly				
Dimensions	50 L Drum Dolly*	100 L Drum Dolly*	200 L Drum Dolly*	
Weight, lbs (kg)	13 (5.90)	16 (7.30)	17 (7.70)	
Diameter, dolly, in. (cm)	15.00 (38.10)	18.90 (48.00)	23.00 (58.40)	
Total height, in. (cm)	6.25 (15.90)	6.25 (15.90)	6.75 (17.20)	
Materials of Construction				
Drum	Polyethylene			
Dolly	304 stainless steel			
Swivel casters	Zinc-plated steel			
Wheels	Polyolefin (PE)			

*Mobius® drum dollies are optional.

Mobius® Collapsible Bins

Dimensions, L				
Width, in. (cm)	100	250	500	1000
Depth, in. (cm)	23.9 (60.70)	24 (60.90)	31.5 (80.01)	45.50 (115.50)
Height, in. (cm)	31.8 (80.77)	31.90 (81.00)	47.2 (119.89)	45.50 (115.50)
	25.2 (64.01)	32.80 (83.30)	41 (104.1)	44.60 (113.20)
Materials of Construction				
Bin	Polypropylene (side or bottom port options)			

Mobius® Stainless Steel Bins*

Dimensions, L				
Width, in. (cm)	200	500	1000	1500
Depth, in. (cm)	28.75 (73.00)	45.00 (114.30)	45.00 (114.30)	45.00 (114.30)
Height, in. (cm)	21.00 (53.40)	29 (73.70)	36.00 (91.40)	36.00 (91.40)
	21.75 (55.20)	31.75 (80.60)	41.00 (104.00)	61.50 (156.20)
Materials of Construction				
Bin	304 /304 L and 316 /316 L stainless steel			

*Custom size up to 3500 L

Mobius® Stainless Steel Transportation Bins

Dimensions, L				
Width, in. (cm)	200	500		
Depth, in. (cm)	30.35 (77.09)	45.54 (115.67)		
Height, in. (cm)	22.63 (57.48)	30.03 (76.27)		
	44.43 (112.85)	46.44 (117.96)		
Materials of Construction				
Bin	304 /304 L stainless steel			

Mobius® Container Carts

Cart Materials	
Frame	Stainless steel 304 L, epoxy paint
Wheels	Two fixed wheels, two wheels on swivel and with brakes. Polyurethane and stainless steel 304 L
Racks	
	Six tilt-able racks (20° max), all movable at the same time. Polyoxymethylene (acetal)
Dimensions and Weight	
Height, in. (mm)	75.4 (1915)
Width, in. (mm)	31.5 (800)
Depth, in. (mm)	33.86 (860)
Weight, lbs. (kg)	approx. 286.6 (130)
Container Cradle Materials	
Cradles	Six cradles: Removable and autoclavable. Stainless steel 316 L with PTFE sliders
Dimensions and Weight	
Height, in. (mm)	7.64 (194)
Width, in. (mm)	22.64 (575)
Depth, in. (mm)	31.5 (800)
Weight, lbs. (kg)	approx. 13.2 (6)

Ordering Information

Single Use Assemblies			
Description	Volume	Qty/Pk	Catalogue No.
Mobius® 2D Standard Assemblies			
Mobius® Standard Assembly, HDPE boat with 2 ports	50 mL	10	SAU050ML20EP10
	100 mL		SAU100ML20EP10
	250 mL		SAU250ML20EP10
	1 L		SAU0001L20EP10
Mobius® Standard Assembly, End-ported with 3 ports	5 L	5	NAU0005L30EP5
	10 L		NAU0010L30EP5
	20 L		NAU0020L30EP5
	50 L		NAU0050L30EP5
Mobius® 3D Drum-style Assemblies			
	50 L	5	SAU0050L41DP5
	100 L		SAU0100L41DP5
	200 L		SAU0200L41DP5
Mobius® Collapsible Bin Assemblies			
			Contact your local representative
Mobius® Stainless Steel Bin Assemblies			
500 L top (4) 1/2 in., bottom (1) 3/4 in.		1	SAM0500L41BP5
1000 L top (4) 1/2 in., bottom (1) 3/4 in.		1	SAM1000L41BP5
1000 L top (4) 1/2 in., bottom (2) 3/4 in.		1	SAM1000LBIN3
1500 L top (4) 1/2 in., bottom (1) 3/4 in.		1	SAM1500L41BP5
1500 L top (4) 1/2 in., bottom (2) 3/4 in.		1	SAM1500LBIN3
2000 L top (4) 1/2 in., bottom (1) 3/4 in.		1	SAM2000L41BP5
2000 L top (4) 1/2 in., bottom (2) 3/4 in.		1	SAM2000LBIN3
<i>The following are made-to-order assemblies (MTOs)</i>			
Mobius® 2D Assemblies			
5 L bag, end-ported with 3 ports (1/4, 3/8, 3/8 in.) with Opticap® XL150 capsule with Millipore Express® SHC 0.5/0.2 µm membrane KHGEG015HH3, buffer media prep with silicone		3	NAU0005LGE3
5 L bag, end-ported with 3 ports (1/4, 3/8, 3/8 in.) with Millipak®-20 capsule with Durapore® 0.22 µm membrane SI1M142A7, buffer media prep with silicone		3	NAU0005LGL3
5 L bag, end-ported with 3 ports (1/4, 3/8, 3/8 in.) with Opticap® XL300 capsule with Millipore Express® SHR 0.5/0.1 µm membrane KHVEG003HH3, media prep with silicone		3	NAU0005LVE3
10 L bag, end-ported with 3 ports (1/4, 3/8, 3/8 in.) with Opticap® XL300 capsule with Millipore Express® SHF 0.2 µm membrane KGEPG003HH3, buffer prep with silicone		3	NAU0010LGE3
10 L bag, end-ported with 3 ports (1/4, 3/8, 3/8 in.) with Millipak®-40 capsule with Durapore® 0.22 µm membrane SI1M543A8, buffer media prep with silicone		3	NAU0010LGL3
10 L bag, end-ported with 3 ports (1/4, 3/8, 3/8 in.) with Opticap® XL300 capsule with Millipore Express® SHR 0.5/0.1 µm membrane KHVEG003HH3, media prep with silicone		3	NAU0010LVE3
20 L bag, end-ported with 3 ports (1/4, 3/8, 3/8 in.) with Opticap® XL300 capsule with Millipore Express® SHC 0.5/0.2 µm membrane KHGEG003HH3, buffer media prep with silicone		3	NAU0020LGE3
20 L bag, end-ported with 3 ports (1/4, 3/8, 3/8 in.) with Millipak®-60 capsule with Durapore® 0.22 µm membrane SI1M143A7, buffer prep with silicone		3	NAU0020LGL3
20 L bag, end-ported with 3 ports (1/4, 3/8, 3/8 in.) with Opticap® XL600 capsule with Millipore Express® SHR 0.5/0.1 µm membrane KHVEG006HH3, media prep with silicone		3	NAU0020LVE3
50 L bag, end-ported with 3 ports (1/4, 3/8, 3/8 in.) with Opticap® XL600 capsule with SHC 0.5/0.2 µm membrane KHGEG006HH3, buffer media prep with silicone		3	NAU0050LGE3
50 L bag, end-ported with 3 ports (1/4, 3/8, 3/8 in.) with Millipak®-100 capsule with Durapore® 0.2 µm membrane MPGL10CA3, buffer prep with silicone		3	NAU0050LGL3
50 L bag, end-ported with 3 ports (1/4, 3/8, 3/8 in.) with Opticap® XL300 capsule with SHR 0.5/0.1 µm membrane KHVEG003HH3, media prep with silicone		3	NAU0050LVE3

Description	Qty/PK	Catalogue No.
Mobius® 3D Transportation Assemblies		
200L Aseptic top (2) 1/2 in. with (1) Bottom (1) 1/2 in. with (2) Lynx male and (1) female connectors	1	SAT0200L102
500L Aseptic top (2) 1/2 in. with (1) Bottom (1) 1/2 in. with (2) Lynx male and (1) female connectors	1	SAT0500L102
200L Non Aseptic top (2) 1/2 in. with (1) Bottom (1) 1/2 in. with (2) Lynx male and (1) female connectors	1	SAT0200L101
500L Non Aseptic top (2) 1/2 in. with (1) Bottom (1) 1/2 in. with (2) Lynx male and (1) female connectors	1	SAT0500L101
Mobius® Collapsible Bin Assemblies		
250 L (top ports 1/4, 1/2, 3/4 in., bottom ports 3/4 in.)	1	SAU0250LARC1
250 L (top ports 1/4, 1/2, 3/4 in., bottom ports 3/4 in.) with Opticap® XLT20 capsule with Millipore Express® SHF 0.22 µm membrane KGEPG2TTH1, buffer prep with C-Flex® tubing)	1	SAU0250LARC2
250 L (top ports 1/4, 1/2, 3/4 in., bottom ports 3/4 in.) with Opticap® XLT20 capsule with Millipore Express® SHF 0.22 µm membrane KGEPG2TTH1, buffer prep with silicone)	1	SAU0250LARC3
250 L (top ports 1/4, 1/2, 3/4 in., bottom ports 3/4 in.) with Opticap® XLT20 capsule with Durapore® 0.22 µm membrane KVGLG2TTH1, buffer media prep with C-Flex® tubing	1	SAU0250LARC4
250 L (top ports 1/4, 1/2, 3/4 in., bottom ports 3/4 in.) with Opticap® XLT20 capsule with Durapore® 0.22 µm membrane KVGLG2TTH1, buffer media prep with silicone	1	SAU0250LARC5
250 L (top ports 1/4, 1/2, 3/4 in., bottom ports 3/4 in.) with Opticap® XLT30 capsule with Millipore Express® SHR 0.5/0.1 µm membrane KHVEG3TTH1, media prep with C-Flex® tubing	1	SAU0250LARC6
250 L (top ports 1/4, 1/2, 3/4 in., bottom ports 3/4 in.) with Opticap® XLT30 capsule with Millipore Express® SHR 0.5/0.1 µm membrane KHVEG3TTH1, media prep with silicone	1	SAU0250LARC7
500 L (top ports 1/4, 1/2, 3/4 in., bottom ports 3/4 in.)	1	SAU0500LARC1
500 L (top ports 1/4, 1/2, 3/4 in., bottom ports 3/4 in.) with Opticap® XLT20 capsule with Millipore Express® SHF 0.22 µm membrane KGEPG2TTH1, buffer prep with C-Flex® tubing	1	SAU0500LARC2
500 L (top ports 1/4, 1/2, 3/4 in., bottom ports 3/4 in.) with Opticap® XLT20 capsule with Millipore Express® SHF 0.22 µm membrane KGEPG2TTH1, buffer prep with silicone	1	SAU0500LARC3
500 L (top ports 1/4, 1/2, 3/4 in., bottom ports 3/4 in.) with Opticap® XLT20 capsule with Durapore® 0.22 µm membrane KVGLG2TTH1, buffer prep with C-Flex® tubing	1	SAU0500LARC4
500 L (top ports 1/4, 1/2, 3/4 in., bottom ports 3/4 in.) with Opticap® XLT20 capsule with Durapore® 0.22 µm membrane KVGLG2TTH1, buffer prep with silicone	1	SAU0500LARC5
500 L (top ports 1/4, 1/2, 3/4 in., bottom ports 3/4 in.) with Opticap® XLT30 capsule with Millipore Express® SHR 0.5/0.1 µm membrane KVGLG2TTH1, buffer prep with C-Flex® tubing	1	SAU0500LARC6
500 L (top ports 1/4, 1/2, 3/4 in., bottom ports 3/4 in.) with Opticap® XLT30 capsule with Millipore Express® SHR 0.5/0.1 µm membrane KVGLG2TTH1, buffer prep with silicone	1	SAU0500LARC7
1000 L (top ports 1/4, 1/2, 3/4 in., bottom ports 3/4 in.)	1	SAU1000LARC1
Mobius® Stainless Steel Bin Assemblies		
500 L top (4) 1/2 in., bottom (1) 3/4 in. with Opticap® XLT20 capsule with Durapore® 0.22 µm membrane KVGLG2TTH1, buffer media prep with silicone and C-Flex® tubing	1	FAM0500LBIN1
500 L top (4) 1/2 in., bottom (1) 3/4 in. with Opticap® XLT20 capsule with Durapore® 0.22 µm membrane KVGLG2TTH1, buffer media prep with C-Flex® tubing	1	FAM0500LBIN2
500 L top (4) 1/2 in., bottom (2) 3/4 in. with Opticap® XLT30 capsule with Millipore Express® SHR 0.5/0.1 µm membrane KHVEG3TTH1, media prep with silicone	1	FAM0500LBIN3
500 L top (4) 1/2 in., bottom (2) 3/4 in. with Opticap® XLT20 capsule with Millipore Express® SHF 0.22 µm membrane KGEPG2TTH1, buffer prep with C-Flex® tubing	1	FAM0500LBIN4
500 L top (4) 1/2 in., bottom (2) 3/4 in. with Opticap® XLT20 capsule with Millipore Express® SHF 0.22 µm membrane KGEPG2TTH1, buffer prep with silicone	1	FAM0500LBIN5
500 L top (4) 1/2 in., bottom (2) 3/4 in. with Opticap® XLT20 capsule with Durapore® 0.22 µm membrane KVGLG2TTH1, buffer media prep with silicone	1	FAM0500LBIN6
500 L top (4) 1/2 in., bottom (2) 3/4 in. with Opticap® XLT20 capsule with Durapore® 0.22 µm membrane KVGLG2TTH1, buffer media prep with C-Flex® tubing	1	FAM0500LBIN7
500 L top (4) 1/2 in., bottom (2) 3/4 in. with Opticap® XLT30 capsule with Millipore Express® SHR 0.5/0.1 µm membrane KHVEG3TTH1, media prep with silicone and C-Flex® tubing	1	FAM0500LBIN8
500 L Universal bag, top (4) 1/2 in., bottom (1) 3/4 in. with Opticap® XLT20 capsule with Durapore® 0.22 µm membrane KVGLG2TTH1, buffer media prep with silicone	1	FAU0500LBIN1
500 L Universal bag, top (4) 1/2 in., bottom (1) 3/4 in. with Opticap® XLT20 capsule with Durapore® 0.22 µm membrane KVGLG2TTH1, buffer media prep with C-Flex® tubing	1	FAU0500LBIN2
500 L Universal bag, top (4) 1/2 in., bottom (2) 3/4 in. with Opticap® XLT20 capsule with Millipore Express® SHF 0.22 µm membrane KGEPG2TTH1, buffer prep with silicone	1	FAU0500LBIN3

Description	Qty/Pk	Catalogue No.
500 L Universal bag, top (4) 1/2 in., bottom (2) 3/4 in. with Opticap® XLT20 capsule with Millipore Express® SHF 0.22 µm membrane KGEPG2TTH1, buffer prep with C-Flex® tubing	1	FAU0500LBIN4
500 L Universal bag, top (4) 1/2 in., bottom (2) 3/4 in. with Opticap® XLT20 capsule with Durapore® 0.22 µm membrane KVGLG2TTH1, buffer media prep with silicone	1	FAU0500LBIN5
500 L Universal bag, top (4) 1/2 in., bottom (2) 3/4 in. with Opticap® XLT20 capsule with Durapore® 0.22 µm membrane KVGLG2TTH1, buffer media prep with C-Flex® tubing	1	FAU0500LBIN6
500 L Universal bag, top (4) 1/2 in., bottom (2) 3/4 in. with Opticap® XLT30 capsule with Millipore Express® SHR 0.5/0.1 µm membrane KHVEG3TTH1, media prep/silicone	1	FAU0500LBIN7
500 L Universal bag, top (4) 1/2 in., bottom (2) 3/4 in. with Opticap® XLT20 capsule with Durapore® 0.22 µm membrane KVGLG2TTH1, buffer media prep/ C-Flex® tubing	1	FAU0500LBIN8
500 L bag, top (4) 1/2 in., bottom (1) 3/4 in. with C-Flex® tubing and silicone	1	SAM0500LBIN1
500 L bag, top (4) 1/2 in., bottom (2) 3/4 in. with silicone	1	SAM0500LBIN3
500 L Universal bag, top (4) 1/2 in., bottom (1) 3/4 in. with C-Flex® tubing and silicone	1	SAU0500LBIN2
500 L Universal bag, top (4) 1/2 in., bottom (2) 3/4 in. with silicone	1	SAU0500LBIN4
1000 L bag, top (4) 1/2 in., bottom (1) 3/4 in. with C-Flex® tubing and silicone	1	SAM1000LBIN1
1000 L bag, top (4) 1/2 in., bottom (2) 3/4 in. with silicone	1	SAM1000LBIN3
1000 L Universal bag, top (4) 1/2 in., bottom (1) 3/4 in. with C-Flex® tubing and silicone	1	SAU1000LBIN2
1000 L Universal bag, top (4) 1/2 in., bottom (2) 3/4 in. with silicone	1	SAU1000LBIN4
1500 L bag, top (4) 1/2 in., bottom (1) 3/4 in. with C-Flex® tubing and silicone	1	SAM1500LBIN1
1500 L bag, top (4) 1/2 in., bottom (2) 3/4 in. with silicone	1	SAM1500LBIN3
2000 L bag, top (4) 1/2 in., bottom (1) 3/4 in. with C-Flex® tubing and silicone	1	SAM2000LBIN1
1500 L Universal bag, top (4) 1/2 in., bottom (1) 3/4 in. with C-Flex® tubing and silicone	1	SAU1500LBIN2
1500 L Universal bag, top (4) 1/2 in., bottom (2) 3/4 in. with silicone	1	SAU1500LBIN4
2000 L bag, top (4) 1/2 in., bottom (2) 3/4 in. with silicone	1	SAM2000LBIN3
2000 L Universal bag, top (4) 1/2 in., bottom (1) 3/4 in. with C-Flex® tubing and silicone	1	SAU2000LBIN2
2000 L Universal bag, top (4) 1/2 in., bottom (2) 3/4 in. with silicone	1	SAU2000LBIN4
Storage Carriers		
Mobius® Polyethylene Drums		
50 L PE Drum with lid	1	DRUM0050L01
100 L PE Drum with lid	1	DRUM0100L01
200 L PE Drum with Lid	1	DRUM0200L01
Drum Dolly		
50 L Drum dolly	1	DOLLY0050L01
100 L Drum dolly	1	DOLLY0100L01
200 L Drum dolly	1	DOLLY0200L01
Mobius® Collapsible Bins		
100 L Bottom port	1	BIN0100L002
250 L Bottom port	1	BIN0250L002
500 L Bottom port	1	BIN0500L002
1000 L Bottom port	1	BIN1000L002
250 L Side port	1	BIN0250L001
1000 L Side port	1	BIN1000L001
Mobius® Stainless Steel Transport Bins		
200L SS Transport Bin	1	TRN0200L001NA
500L SS Transport Bin	1	TRN0500L001NA
Transport Dolly		
200L Transport Dolly	1	TRND0L0200L01NA
500L Transport Dolly	1	TRND0L0500L01NA

Stainless Steel Bins*

Description	Basic Unit	With Tray	With Casters	With Cart	With Tray and Casters	With Tray and Cart
Mobius® Stainless Steel Bins*						
200 L 304/304 L Stainless Steel	M0200L304B1NA	M0200L304B2NA	M0200L304B3NA	M0200L304B4NA	M0200L304B5NA	M0200L304B6NA
200 L - 316 Stainless Steel	M0200L316B1NA	M0200L316B2NA	M0200L316B3NA	M0200L316B4NA	M0200L316B5NA	M0200L316B6NA
500 L - 304/304 L Stainless Steel	M0500L304B1NA	M0500L304B2NA	M0500L304B3NA	M0500L304B4NA	M0500L304B5NA	M0500L304B6NA
500 L - 316 Stainless Steel	M0500L316B1NA	M0500L316B2NA	M0500L316B3NA	M0500L316B4NA	M0500L316B5NA	M0500L316B6NA
1000 L -304/304 L Stainless Steel	M1000L304B1NA	M1000L304B2NA	M1000L304B3NA	M1000L304B4NA	M1000L304B5NA	M1000L304B6NA
1000 L - 316 Stainless Steel	M1000L316B1NA	M1000L316B2NA	M1000L316B3NA	M1000L316B4NA	M1000L316B5NA	M1000L316B6NA
1500 L - 304/304 L Stainless Steel	M1500L304B1NA	M1500L304B2NA	NA	NA	NA	NA
1500 L - 316 Stainless Steel	M1500L316B1NA	M1500L316B2NA	NA	NA	NA	NA
Bin Size	Casters***	Cart**	Registration Plate**	Tray		
Stainless Steel Bin Accessories						
200 L	M0000LCAST	M0200LDLly	M0000PLATE	M0200LTRAY		
500 L	M0000LCAST	M0500LDLly	M0000PLATE	M0500LTRAY		
1000 L	M0000LCAST	M1000LDLly	M0000PLATE	M0500LTRAY		
1500 L	N/A	N/A	M0000PLATE	M0500LTRAY		

*Custom size up to 3500L

**Only required when retrofitting non-Mobius® process containers to Mobius® bin.

***Used to move individual empty or filled bin

Mobius® Container Cart

Description	Core System/Accessories	Catalogue No.
Mobile Container Storage System for Mobius® FlexReady System, CL-1/CL-2 (green)*	Core	MBSMCTOCL
Mobile Container Storage System for Mobius® FlexReady System, VF-1/VF-2 (blue)*	Core	MBSMCTOVF
Mobile Container Storage System for Mobius® FlexReady System, TF-1/TF-2 (magenta)*	Core	MBSMCTOTF
Mobile Container Storage System for Mobius® FlexReady System, BMF (grey)*	Core	MBSMCTBMF
Container cradle (qty. 1)	Spare	MBS1CRADL50
Container cradle (qty. 6)	Spare	MBS6CRADL50
User manual	Accessory	MBSACCMCTS

*Each cart system includes six container cradles. Systems are identical except for color.

To Place an Order or Receive Technical Assistance

In the U.S. and Canada, call toll-free 1-800-645-5476

For other countries across Europe and the world please visit: www.emdmillipore.com/offices

For Technical Service, please visit: www.emdmillipore.com/techservice



www.emdmillipore.com

EMD Millipore and the M mark are trademarks of Merck KGaA, Darmstadt, Germany.

Mobius, Opticap, Durapore, Millipak, Millipore Express, and Access are registered trademarks of Merck KGaA, Darmstadt, Germany.

NovaSeal and PureFlex are trademarks of Merck KGaA, Darmstadt, Germany.

Colder is a registered trademark of Colder Products Company.

Kynar is a registered trademark of Arkema, Inc.

C-Flex is a registered trademark of St Gobain Performance Plastics Corporation
Lit. No. DS4579EN00 Ver. 6.0 04/2016 PS SBU-11-04889

©2016 EMD Millipore Corporation, Billerica, MA 01821 USA. All rights reserved.